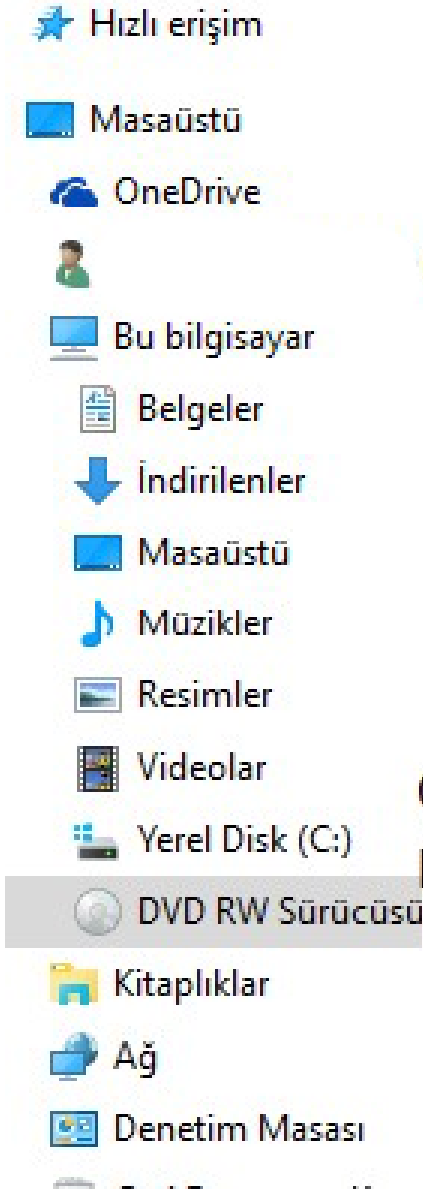




DATA LOGGER





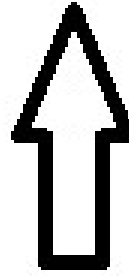
Şu Anda Diskte Olan Dosyalar (2)



English



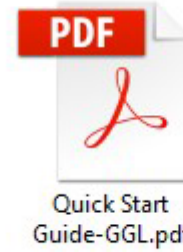
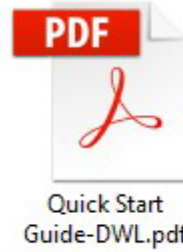
中文



CD'Yİ TAKTIKTAN SONRA
BU DOSYAYI AÇALIM

- ★ Hızlı erişim
- Masaüstü
- OneDrive
- Bu bilgisayar
- Belgeler
- İndirilenler
- Masaüstü
- Müzikler
- Resimler
- Videolar
- Yerel Disk (C:)
- DVD RW Sürücüsü
- Kitaplıklar
- Λ&

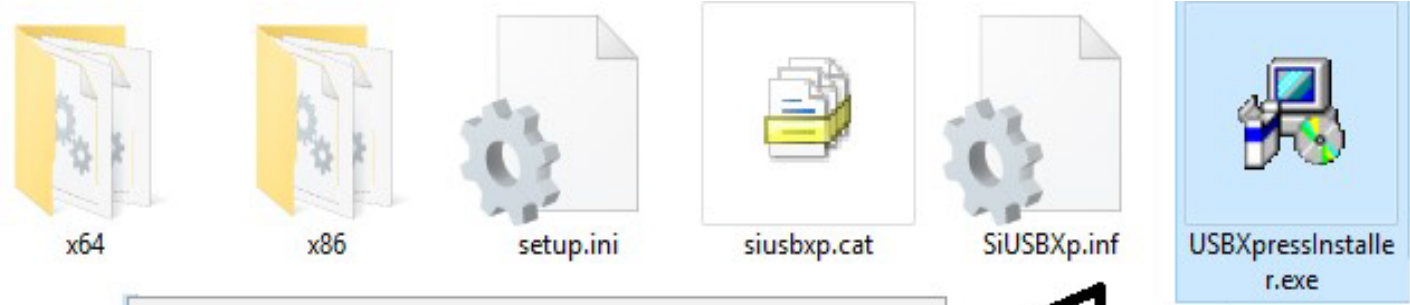
Şu Anda Diskte Olan Dosyalar (7)



DRIVER DOSYASINI
AÇIYORUZ

Masaüstü
OneDrive
Bu bilgisayar
Belgeler
İndirilenler
Masaüstü
Müzikler
Resimler
Videolar
Yerel Disk (C:)
DVD RW Sürücüsü
Kitaplıklar
Ağ
Denetim Masası
Geri Dönüşüm Kutu
BUYUK FOTO
resimler subat_2016
santral müzik
YAN_TEKLIFLER

6 öğe 1 öğe seçildi 3,27 MB

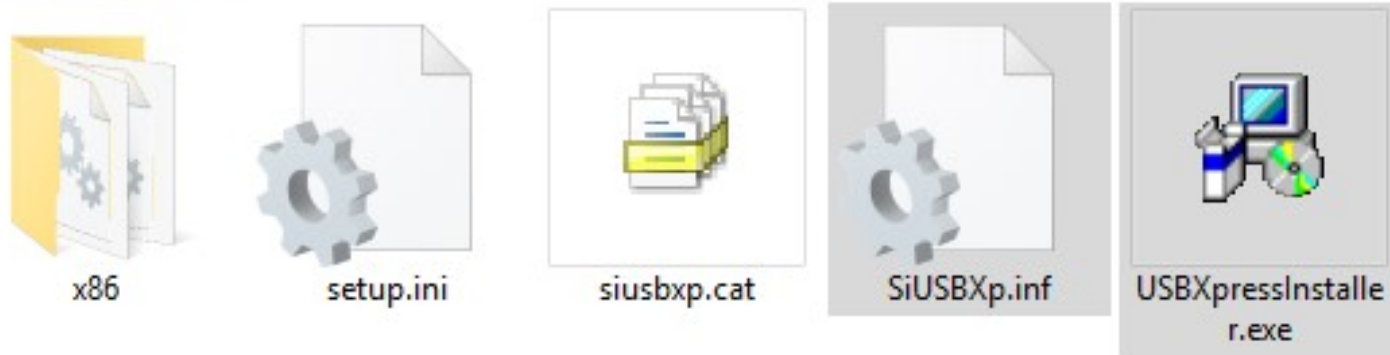


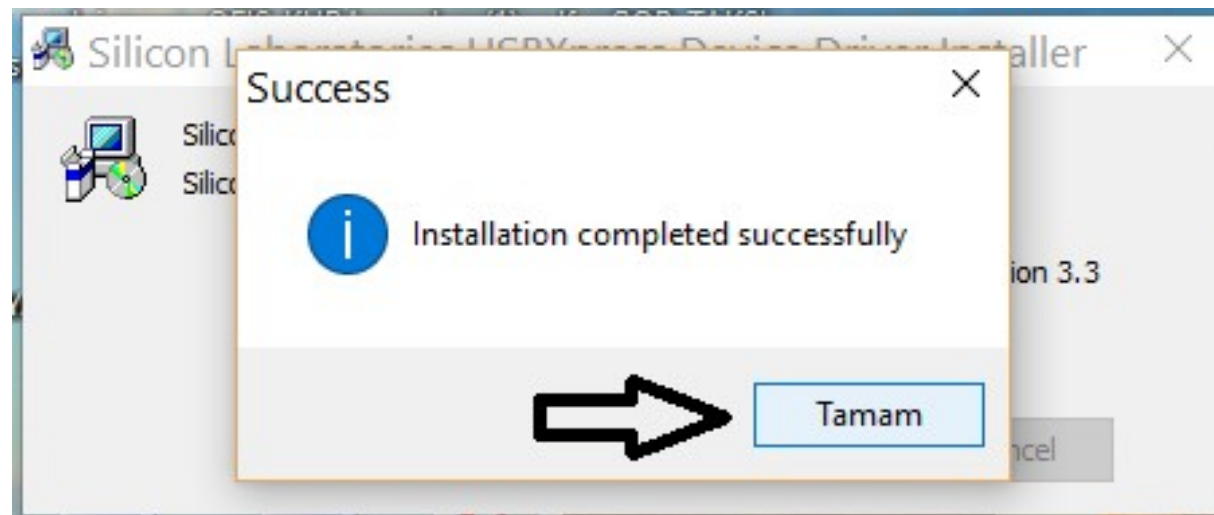
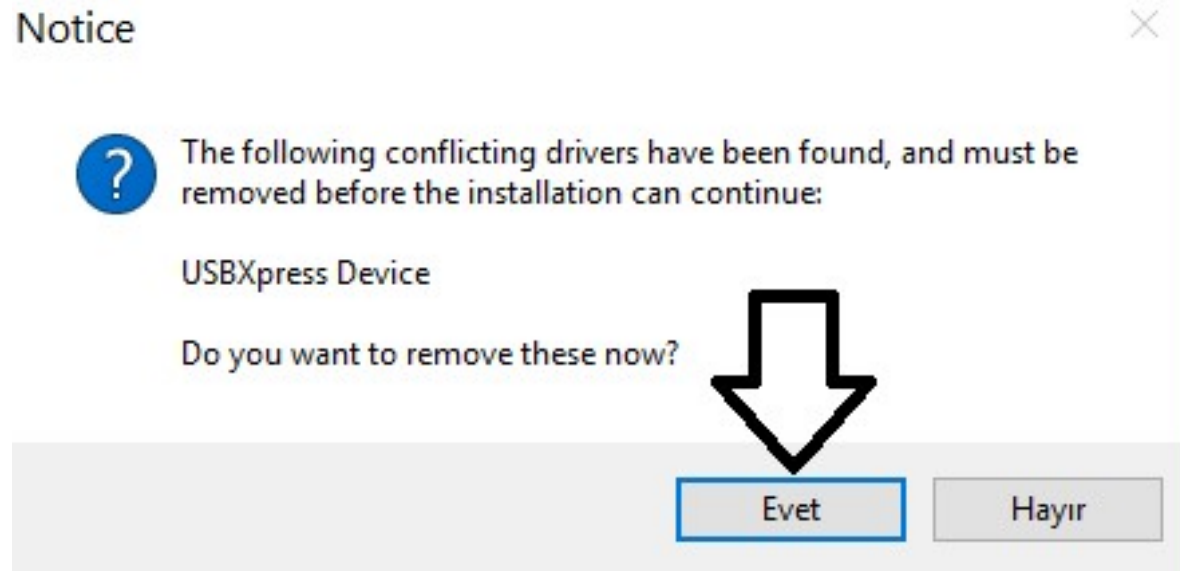
Aç

- Yönetici olarak çalıştır
- Uyumluluk sorunu giderme
- Grafik işlemciyle çalıştır
- Başlangıç ekranına sabitle
- Windows Defender ile tara...
- Norton Internet Security
- Arşive ekle...
- Arşive ekle "USBXpressInstaller.rar"
- Sıkıştır ve eposta gönder...
- Sıkıştır "USBXpressInstaller.rar" ve eposta gönder
- Gönder
- Kopyala
- Kısayol oluştur
- Dosya Sicili
- Özellikler

USBXPRESSINSTALLER.EXE ÜZERİNE
MOUSE SAĞ TUŞU
İLE TIKLANIR. SONRA
YÖNETİCİ OLARAK
ÇALIŞTIR TIKLANIR.

Olan Dosyalar (6)





√ Şu Anda Diskte Olan Dosyalar (7)



Documents



Driver



Software



Quick Start
Guide-DWL.pdf



Quick Start
Guide-GGL.pdf



Quick Start
Guide-GSM.pdf



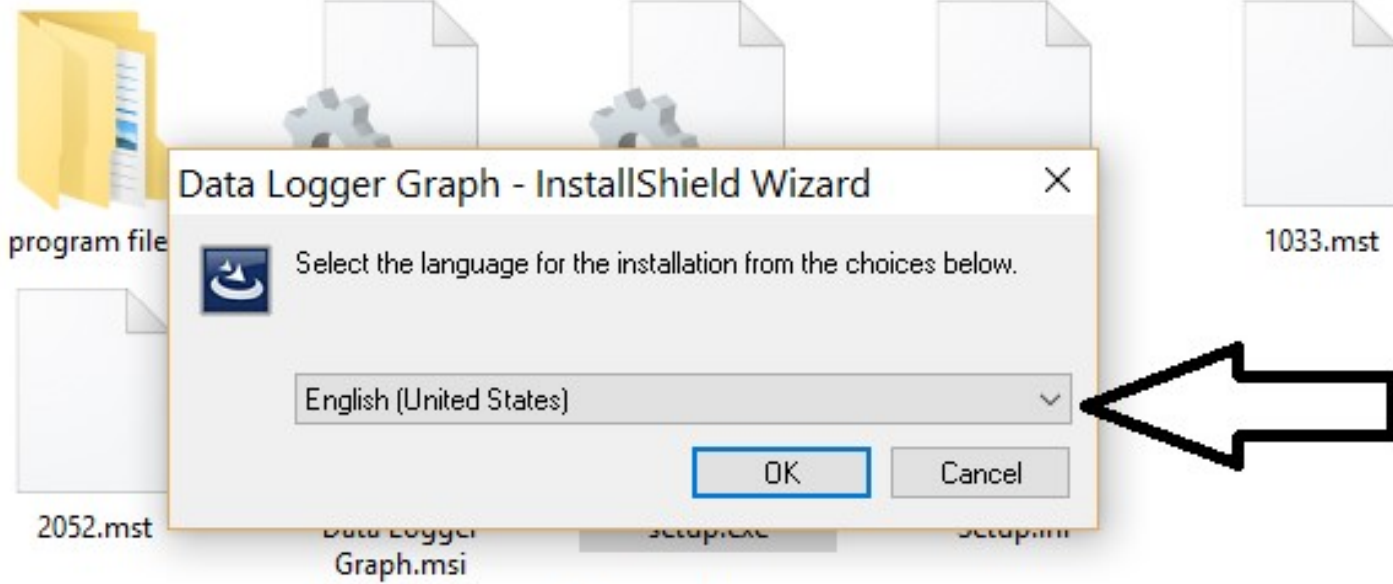
Quick Start
Guide-USB.pdf



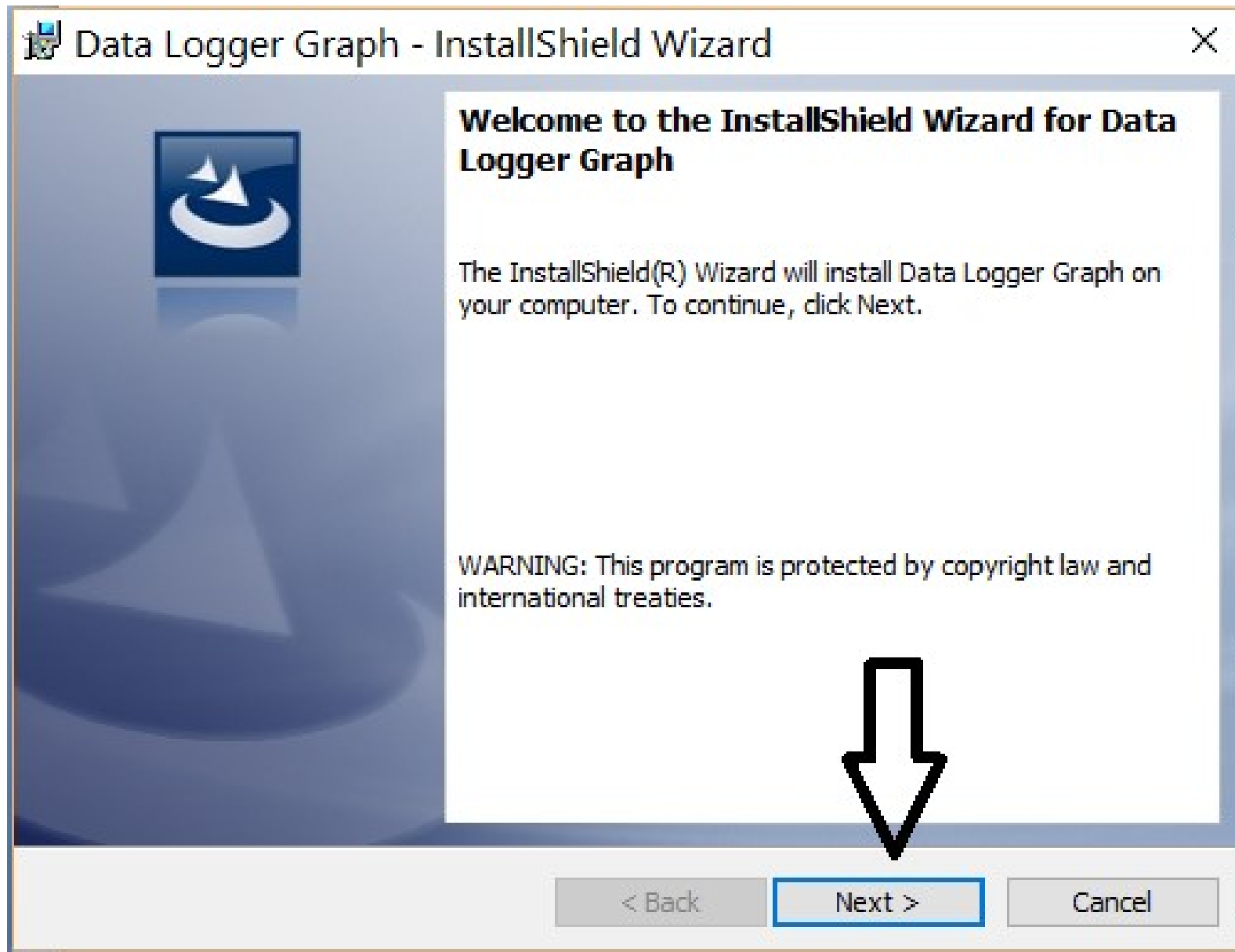
AZ ÖNCE DRIVER KURULUMU BİTTİ.
ŞİMDİ SOFTWARE DOSYASINI
AÇIYORUZ.

The image shows a Windows File Explorer window with a context menu open over the file 'setup.exe'. The window title is 'DVD RW Sürücüsü (D:) DGraph > English > Software'. The left sidebar shows the navigation pane with 'DVD RW Sürücüsü' selected. The main pane shows the following files: 'program files', '2052.mst', 'Data Logger Graph.msi', '0x0409.ini', and '0x0804.ini'. The 'setup.exe' file is highlighted, and the context menu is open, showing the following options: 'Aç', 'Yönetici olarak çalıştır', 'Uyumluluk sorunu giderme', 'Grafik işlemciyle çalıştır', 'Windows Defender ile tara...', 'Norton Internet Security', 'Arşive ekle...', 'Arşive ekle "setup.rar"', 'Sıkıştır ve eposta gönder...', 'Sıkıştır "setup.rar" ve eposta gönder', 'Gönder', 'Kopyala', 'Kısayol oluştur', 'Dosya Sicili', and 'Özellikler'. A black arrow points to the 'Yönetici olarak çalıştır' option in the context menu. Another black arrow points to the 'setup.exe' file in the main pane. Below the context menu, there is a text box with the following text: 'SETUP.EXE'YE MOUSE SAĞ TUŞU İLE BASIYORUZ YÖNETİCİ OLARAK ÇALIŞTIR'A TIKLIYORUZ.'

Şu Anda Diskte Olan Dosyalar (9)

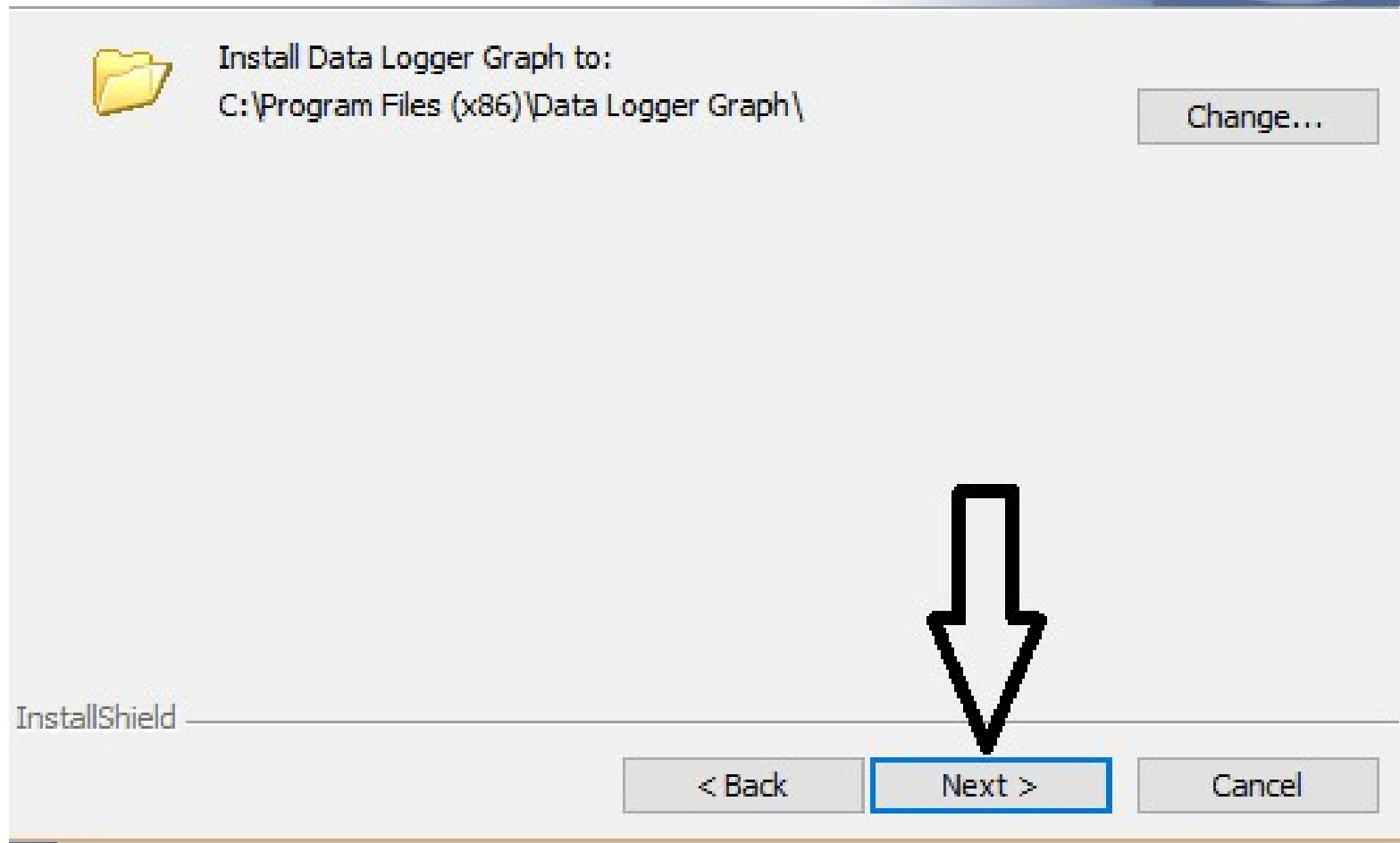


İNGİLİZCEYİ SEÇİYORUZ



Destination Folder

Click Next to install to this folder, or click Change to install to a different folder.



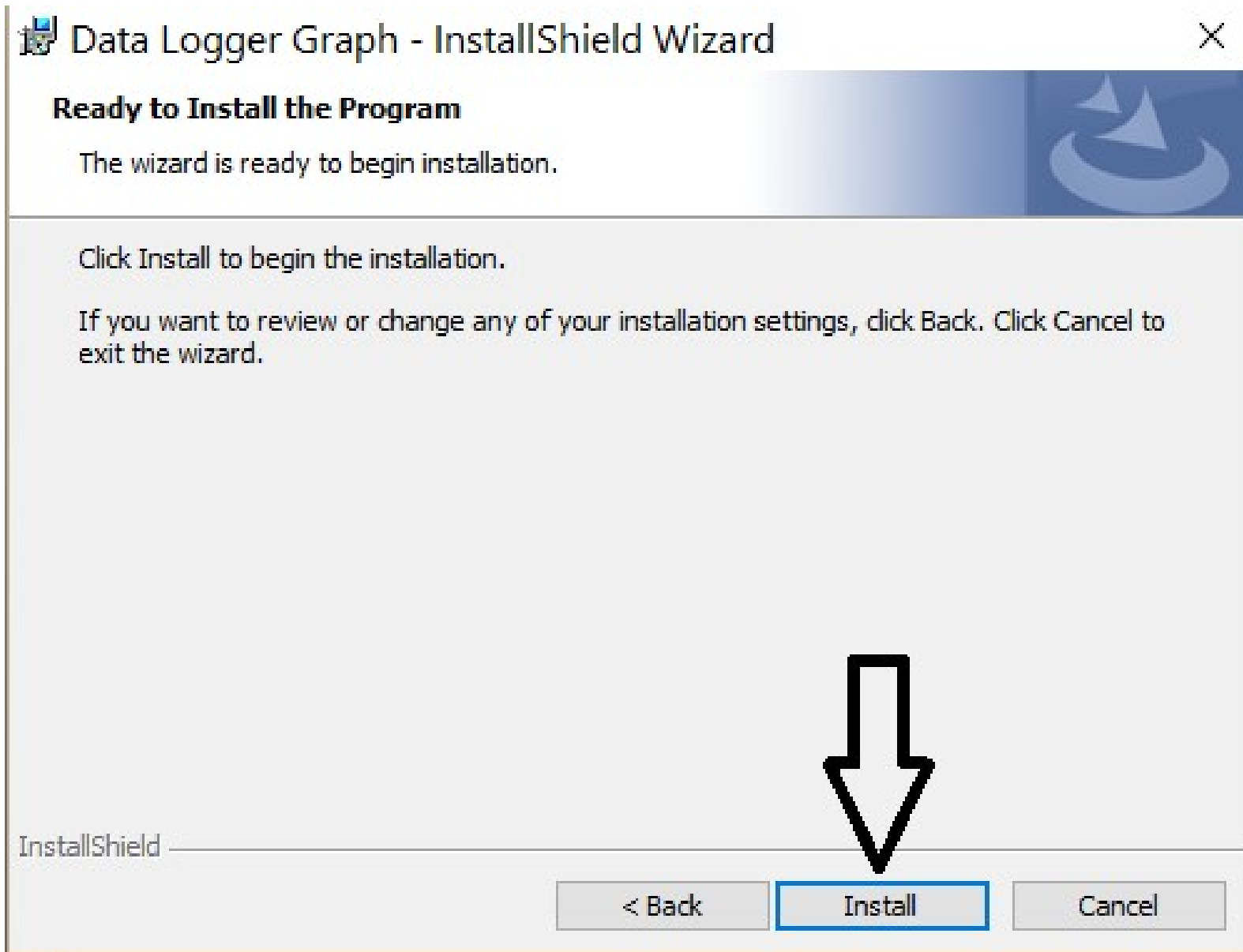
The image shows a Windows-style installation dialog box. At the top, there is a blue header bar with a logo on the right. Below the header, the text "Destination Folder" is displayed. A message instructs the user to click "Next" to install to the current folder or "Change" to select a different one. The main area shows a yellow folder icon, the text "Install Data Logger Graph to:", and the path "C:\Program Files (x86)\Data Logger Graph\". A "Change..." button is located to the right of the path. At the bottom, there are three buttons: "< Back", "Next >", and "Cancel". The "Next >" button is highlighted with a blue border, and a large black arrow points down to it. The text "InstallShield" is visible in the bottom left corner of the dialog box.

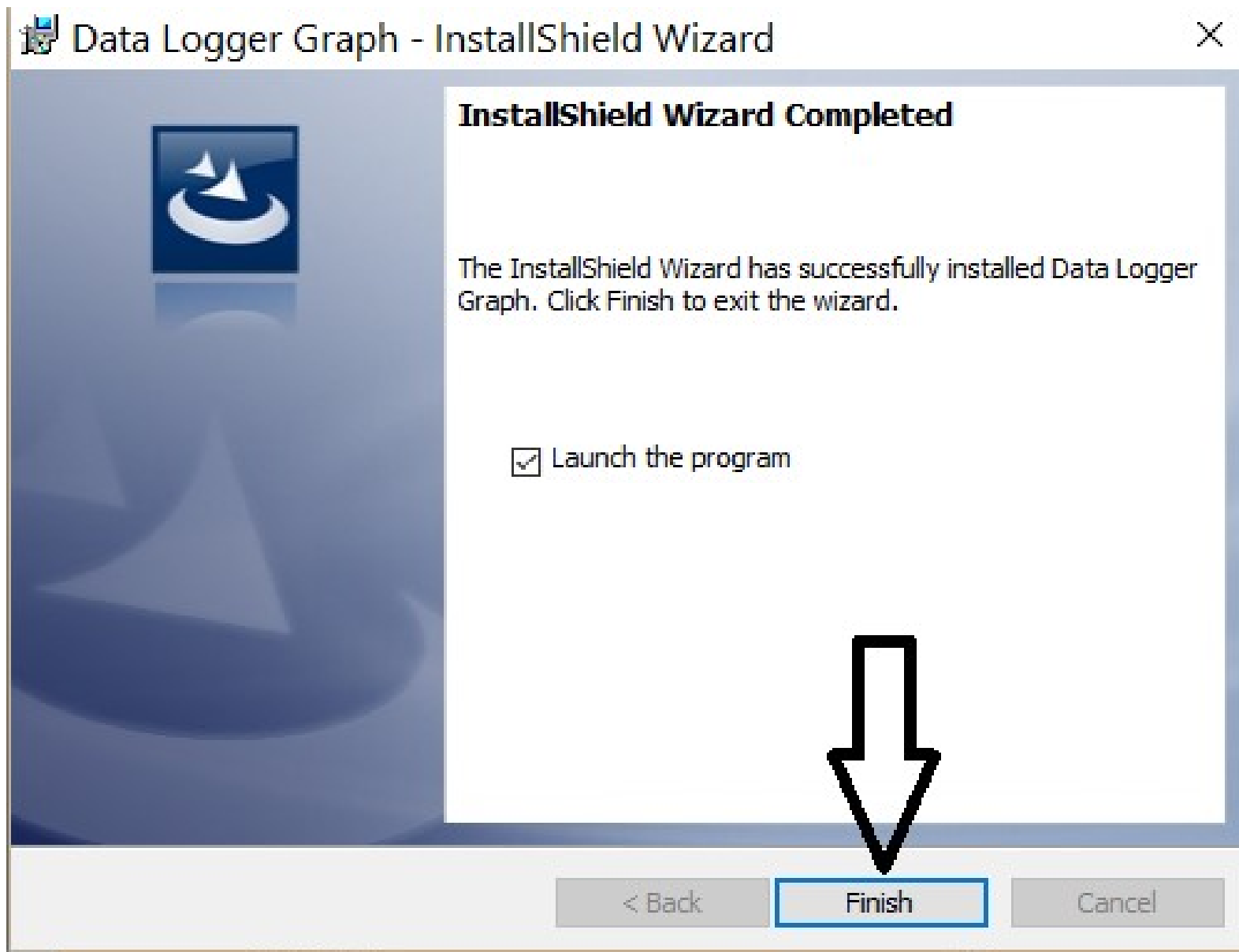
Install Data Logger Graph to:
C:\Program Files (x86)\Data Logger Graph\

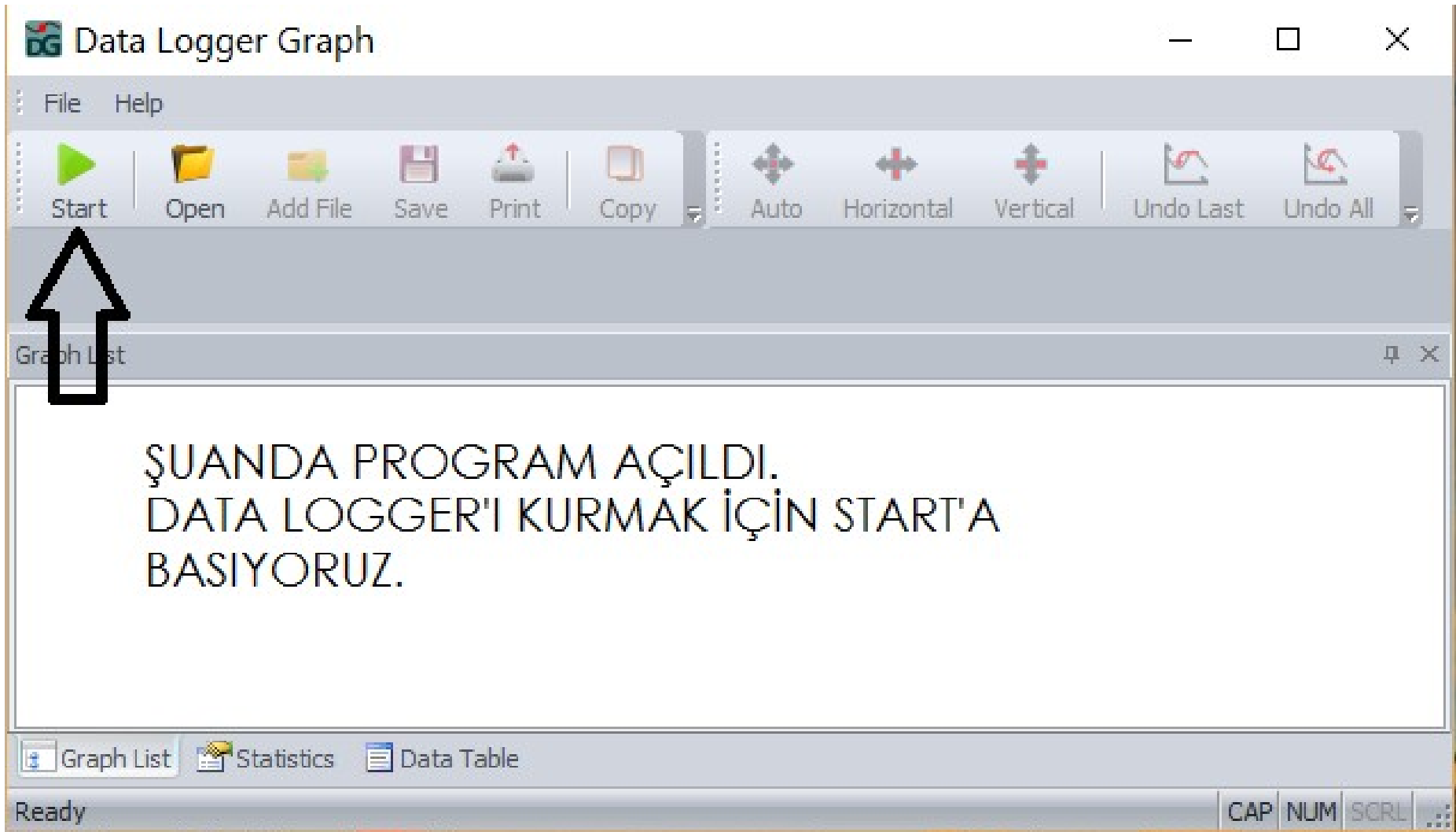
Change...

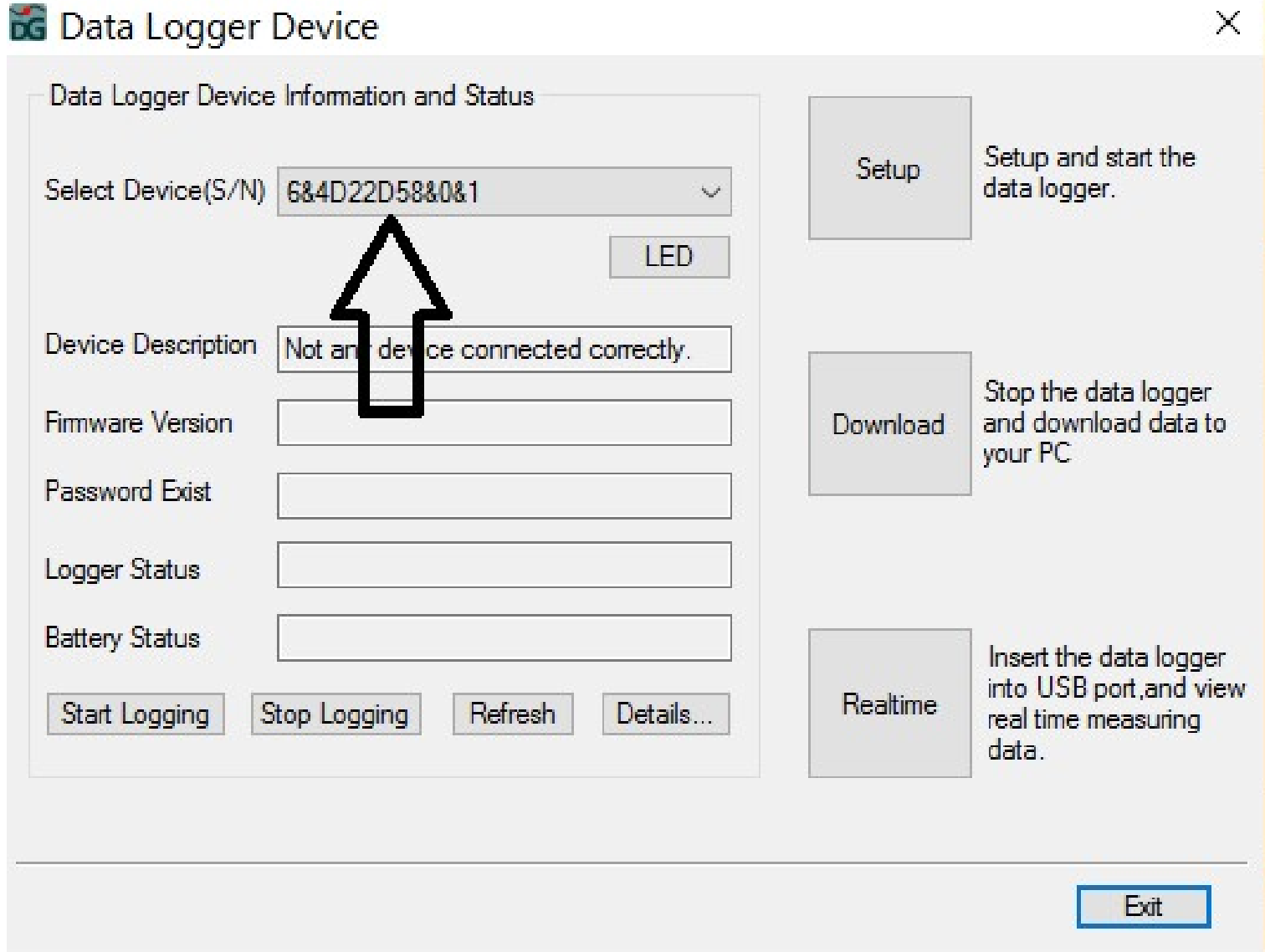
InstallShield

< Back Next > Cancel

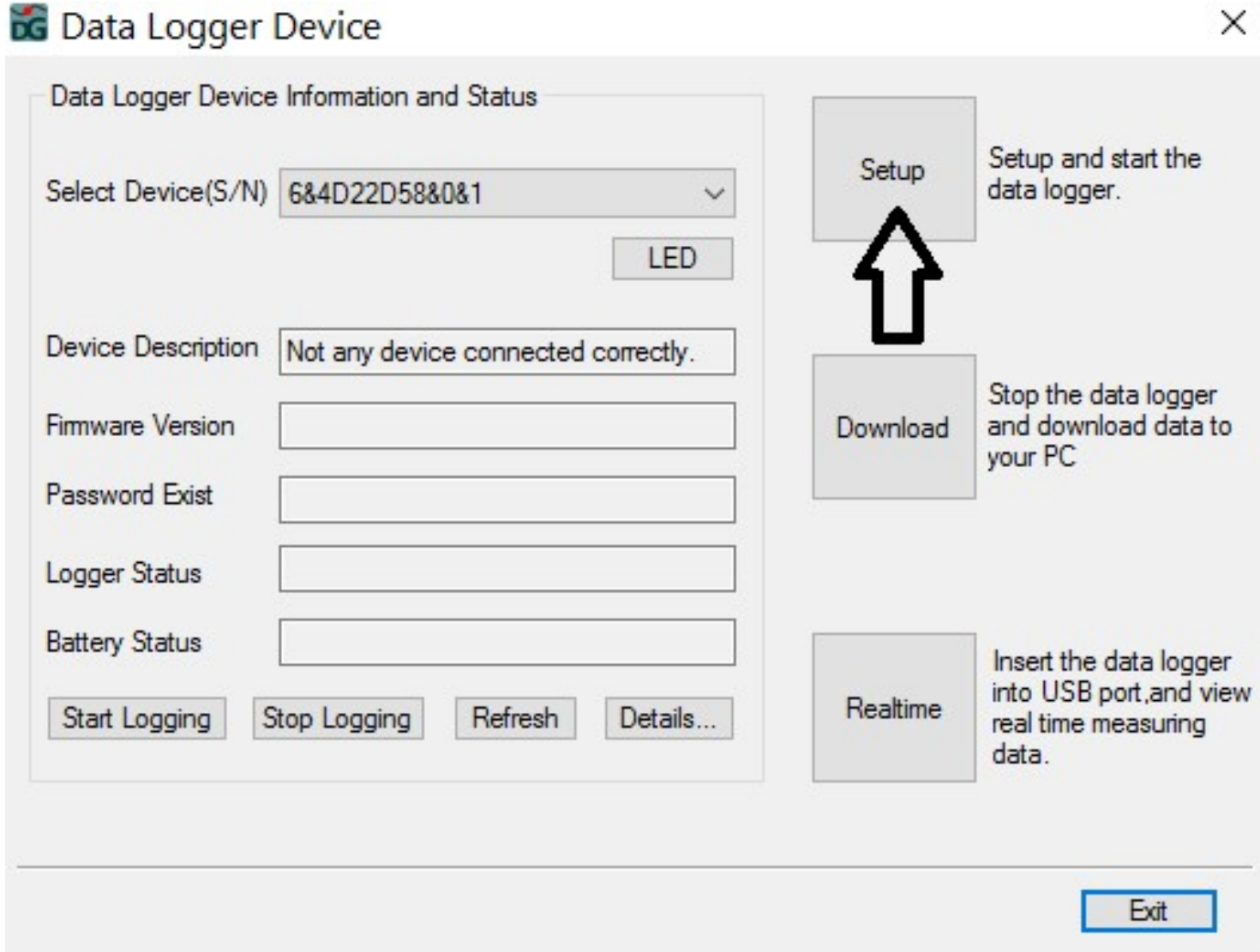








BU ŞEKİLDE CİHAZIN SERİ NUMARASI GÖRÜNÜYORSA YÜKLEME SORUNSUZ TAMAMLANMIŞTIR.



CİHAZI KULLANIMA HAZIRLAMAK İÇİN SETUP'A TIKLIYORUZ.

1 2 3 4

Data Logger Setup - Demo

General Channel Settings Start and Stop Method Advanced

Logger Name
Name the data logger to give it a unique identity.
Logger Name (Max 30 char.)

Sample Rate
Select time interval for a data logging.
Sample Rate

Password
Tick the "Password" and enter max. 6 digits(0~9), and it will need you to enter the same password when download data next time. NOTE: if you forget it, you can't download data and all data will be lost. But you can setup again to restart logging in any case.
 Password
Again

SIRASIYLA SEKMELERDEKİ AYARLARI YAPIYORUZ. EN SON FINISH'E BASIYORUZ.

5

Data Logger Setup - Demo

General Channel Settings Start and Stop Method Advanced

Logger Name
Name the data logger to give it a unique identity.
Logger Name ECZANE DOLAP1 (Max 30 char.)

Sample Rate
Select time interval for a data logging.
Sample Rate 1h

Password
Tick the "Password" checkbox, and it will need you to enter the same password when you download the data. NOTE: if you forget it, you can't download data and restart logging in any case.
 Password
Again

1s
2s
5s
10s
15s
30s
1m
2m
3m
5m
10m
30m
1h
2h
3h
6h
12h
24h

CİHAZ HANGİ DOLAPTA YA DA BİRİMDE ÇALIŞACAKSA CİHAZA UYGUN İSİM VERİYORUZ DAHA SONRA ÖLÇÜM ZAMANINI SEÇİYORUZ. S: SANİYE, M: DAKİKA, H: SAAT



İKİNCİ SEKMEYE GEÇİYORUZ

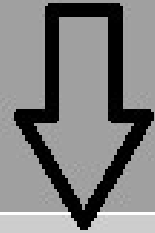
Data Logger Setup - Demo



General Channel Settings Start and Stop Method Advanced

Channel	Description	Status	Unit	Low Limit	High Li
0	Temp.	Enable	°C	-40,0	125,0
1	RH	Enable	%rh	0,0	100,0

TEMP: SICAKLIK
RH: NEM



REFERANS DEĞERLERİNİ
AYARLAMAK İÇİN BU ÇUBUĞU
SAĞA DOĞRU KAYDIRIN



Data Logger Setup - Demo



General Channel Settings Start and Stop Method Advanced

Channel	Unit	Low Limit	High Limit	Alarm	Alarm Hold
0	°C	2,0	8,0	<input checked="" type="checkbox"/> Alarm	<input type="checkbox"/> Hold
1	%rh	0,0	100,0	<input type="checkbox"/> Alarm	<input type="checkbox"/> Hold

REFERANS DEĞERLERİ GİRİYORUZ.
CİHAZIN ALARM VERMESİ İÇİN
KUTUCUĞU İŞARETLİYORUZ.
BU DURUMDA SICAKLIK 2-8 DERECE
DIŞINA ÇIKTIĞINDA SESLİ VE GÖRSEL
ALARM VERİLECEK.



ÜÇÜNCÜ SEKMEYE
GEÇİYORUZ

Data Logger Setup - Demo

General Channel Settings Start and Stop Method Advanced

Start

Select how or when to start logging.

- Start Immediately Data logger will start logging when setup is finished.
- Start by Button Press and hold the button until the green LED lights to start logging.
- Start at Data logger will delay to start until the DATE and TIME which are set below.

Date 17. 7.2016 Time 12:59:14

Stop

Select how to stop logging.

- Stop When Full Data logger will stop when memory is full.
- Overwrite When Full Logger continues to log when memory is full, and the oldest data will be overwritten. It can be stopped by holding button.
- Sample Points Data logger will log the specified sample points, and then stop.

16000

Logging Duration 666 Days-16 Hours-00 Minutes-00 Seconds

İŞARETLİ YERLERİ SEÇİYORUZ

Data Logger Setup - 160418DWL0034356(Connected) X

General Channel Settings Start and Stop Method **Advanced**

LED
 Green LED Indication for Logger Status Including LOGGING, DELAYED and FINISHED status.

Button
 Confirm and Clear LED Alarm by Button User can press and hold the button on housing of data logger until the red LED lights to clear and reset LED alarm. if no alarm, doing like this will be no practical effect.

LCD
 The LCD Always On The LCD is always on, and it won't save power

Clear Calibration
Clear Calibration

Select Thermocouple Type
 Type K Type J Type T Type R Type S

Alarm Phone Number
SMS Alarm Phone Number Setup

Alarm Delay
 No Delay 10 min. 30 min. 60 min.

Scale and Offset
Output Unit hPa
Point 1 Input 0 Display Output 0
Point 2 Input 0 Display Output 0

AYARLAMA BİTTİKTEN SONRA BASIYORUZ. Finish Cancel

SON OLARAK 4. SEKMEDEYİZ.

BURDAKİ EN ÖNEMLİ AYAR **ALARM GECİKTİRME ÖZELLİĞİ.** BU ÖZELLİK SAYESİNDE ANLIK OLARAK CİHAZLAR SESLİ ALARM VERMEYECEK.

KULLANICIYI RAHATSIZ ETMEYECEK. İŞARETLENEN ZAMAN SONUNA KADAR REFERANS DEĞERLERİ DIŞINDA SICAKLIK VEYA NEM ÖLÇÜLÜYORSA DATALOGGER ALARM VERECEKTİR.

DİKKAT

**BU UYARI ÇIKTIKTAN SONRA
TAMAM'A BASIYORUZ.
DAHA SONRA KAYDI BAŞLATMAK İÇİN
STAR DÜĞMESİNE BASIYORUZ (3 SN BASILI TUTALIM)**

The LCD Always On The LCD is always on, and it won't save power

Clear Calibrat

Select Them

Typ

Alarm Phone

SMS Alarm Phone Number Setup

Alarm Delay

No Delay 10 min. 30 min. 60 min.

Data Logger Graph

Successfully!
Please start logging by pressing button.

Tamam

ŞUANDA CİHAZIMIZ KURULDU KAYIT YAPMAYA HAZIR.



SAĞ ÜST KÖŞEDEKİ
ÇERÇEVE İŞARETİ
ÇIKIYORSA CİHAZ KAYIT
YAPMAYA HAZIRDIR.

FAKAT HENÜZ KAYIT
BAŞLAMADI.



KAYIDI BAŞLATMAK

“START/STOP” DÜĞMESİ
BASILI TUTULUR

“LOG” YAZISI EKRAHA GELİNCE
DATA LOGGER KAYIT YAPMAYA
BAŞLAR.

Data Logger Device

Data Logger Device Information and Status

Select Device(S/N) 160418DWL0034356

LED

Device Description Temperature, Relative Humidity and De

Firmware Version 1.3

Password Exist No password

Logger Status Logging...

Battery Status OK

Start Logging Stop Logging Refresh Details...

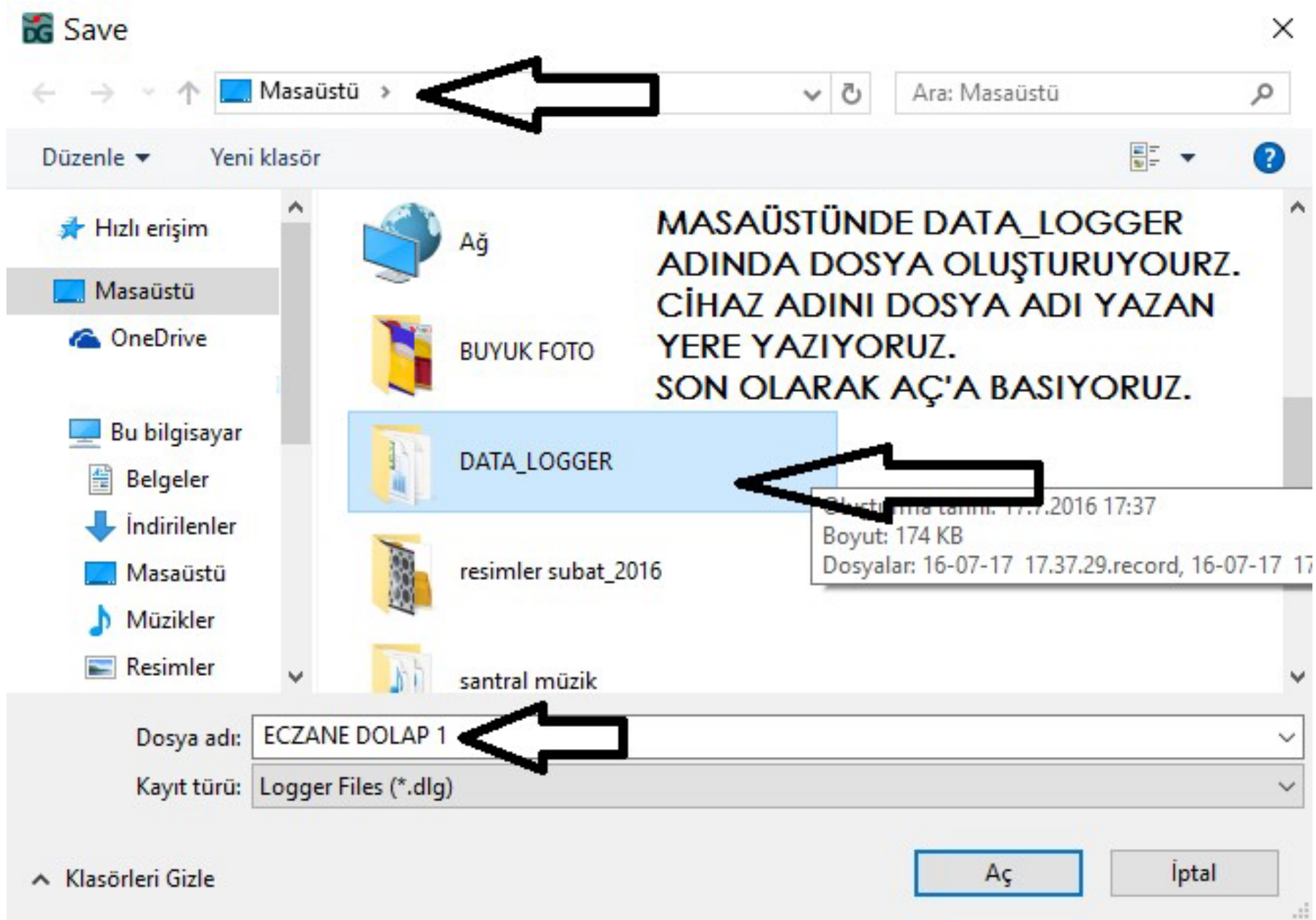
Setup Setup and start the data logger.

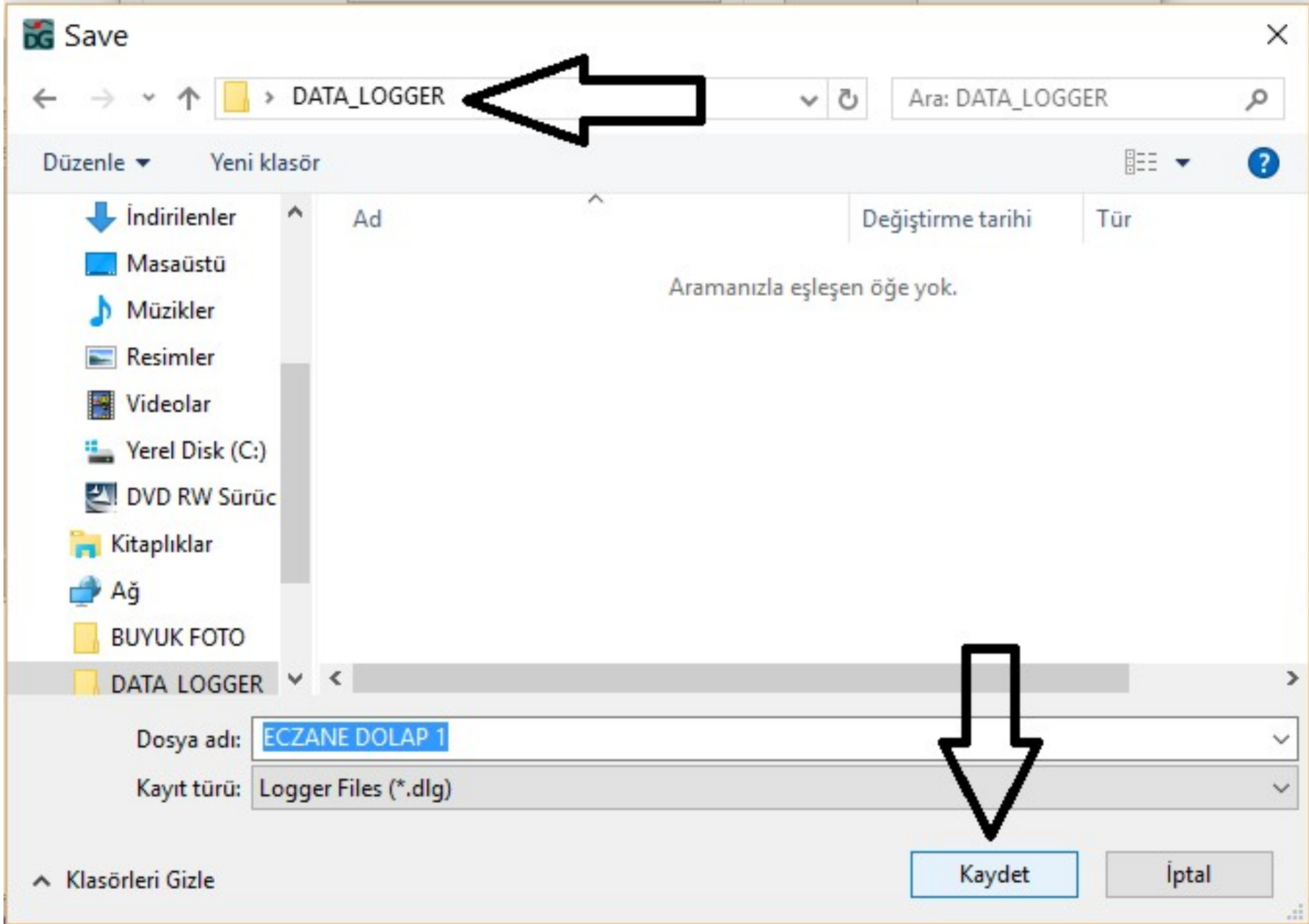
Download Stop the data logger and download data to your PC

Realtime Insert the data logger into USB port, and view real time measuring data.

KAYDEDİLEN VERİLERİ İNDİRMEK İÇİN DOWNLOAD'A BASILIR.

Exit





LED

Device Description: Temperature, Relative Humidity and De

Firmware Version: 1.3

Password Exist: No password

Logger Status: Stop

Battery Status


Start Logging

Download

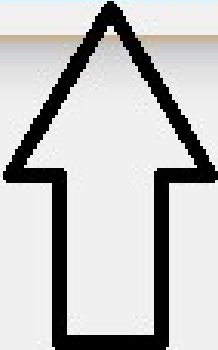
Stop the data logger and download data to your PC

Insert the data logger into USB port, and view real time measuring data.

Data Logger Graph

 Successfully! 308 readings are saved.

Tamam



Device Description

Firmware Version

Password Exist

Logger Status

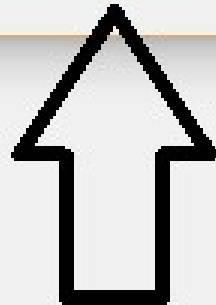
Battery Status

Stop the data logger
and download data to
your PC

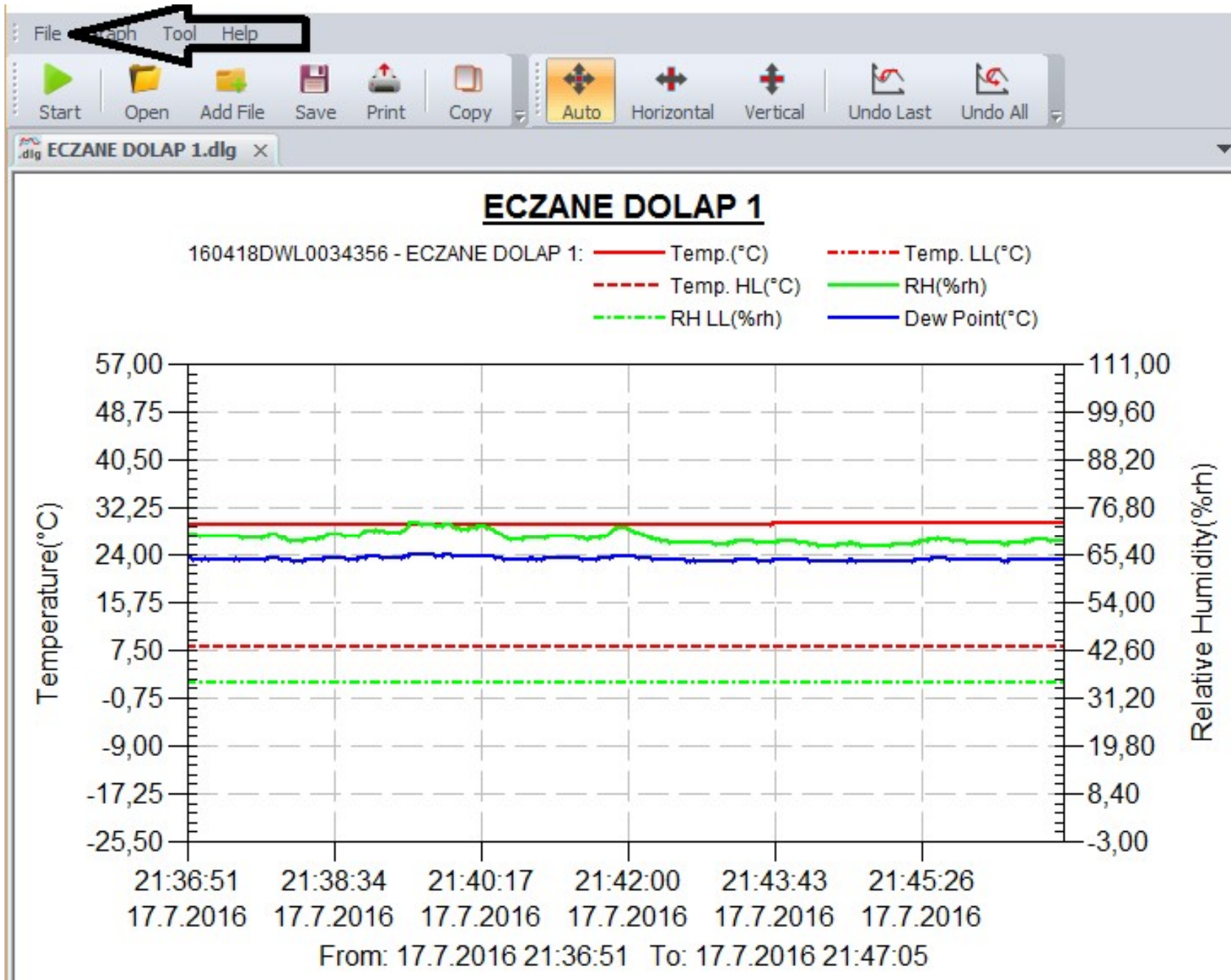
Downloading Finished

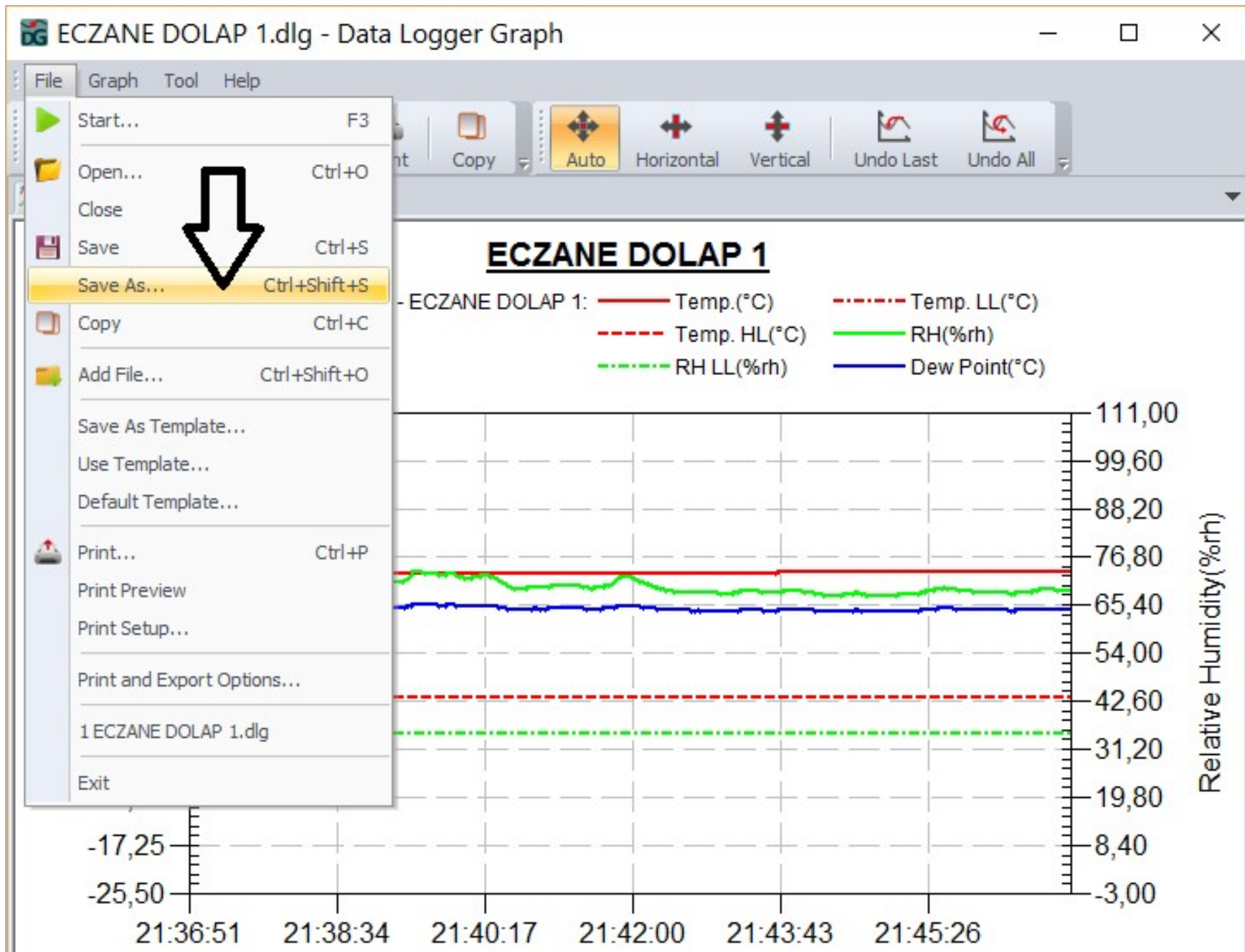


Click "Open" to open this downloaded file, or Click "Add" to open this
downloaded file in multi-graph mode.



the data logger
USB port, and view
the measuring





Save As

DATA_LOGGER

Ara: DATA_LOGGER

Düzenle Yeni klasör

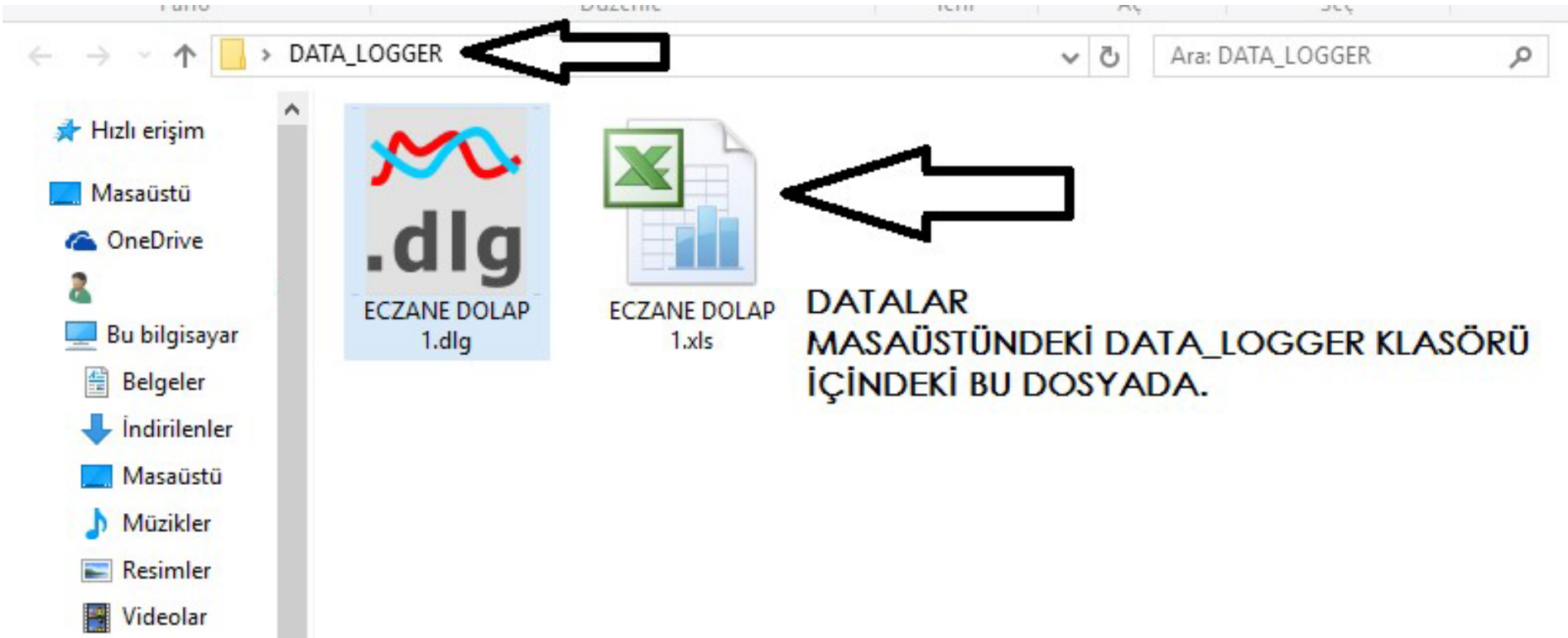
Ad	Değiştirme tarihi	Tür
ECZANE DOLAP 1.dlg	17.7.2016 21:55	Data Logger Grap...

Dosya adı: ECZANE DOLAP 1.dlg

Kayıt türü: Data Logger Files (*.dlg)

- Data Logger Files (*.dlg)
- Tab Separated Text (*.txt)
- Tab Separated Text for Window (*.txt)
- Comma Separated Values (*.csv)
- Comma Separated Values for Window (*.csv)
- Microsoft Excel (*.xls)
- Microsoft Excel for Window (*.xls)
- Bitmap for Window (*.bmp)
- JPEG for Window (*.jpg)

EXCEL'DE TABLO OLARAK ÇIKTI ALMAK İÇİN İŞARETLİ YERİ SEÇİYORUZ.



K14											
	A	B	C	D	E	F	G	H	I	J	K
1	Index	Timestamp	Temp.(°C)	Temp. LL('	Temp. HL('	RH(%rh)	RH LL(%rh)	Dew Point	Serial Number	Logger Name	
2	0	17.7.2016 21:36	29,3	2	8	70,4	35	23,4	160418DWL0034356	ECZANE DOLAP 1	
3	1	17.7.2016 21:36	29,2	2	8	70,4	35	23,3			
4	2	17.7.2016 21:36	29,2	2	8	70,2	35	23,2			
5	3	17.7.2016 21:36	29,2	2	8	70,2	35	23,2			
6	4	17.7.2016 21:36	29,2	2	8	70,1	35	23,2			
7	5	17.7.2016 21:37	29,2	2	8	70	35	23,2			
8	6	17.7.2016 21:37	29,3	2	8	70	35	23,3			
9	7	17.7.2016 21:37	29,2	2	8	70	35	23,2			
10	8	17.7.2016 21:37	29,2	2	8	70	35	23,2			
11	9	17.7.2016 21:37	29,2	2	8	69,8	35	23,1			
12	10	17.7.2016 21:37	29,2	2	8	69,8	35	23,1			
13	11	17.7.2016 21:37	29,2	2	8	69,8	35	23,1			
14	12	17.7.2016 21:37	29,2	2	8	69,7	35	23,1			
15	13	17.7.2016 21:37	29,2	2	8	69,8	35	23,1			
16	14	17.7.2016 21:37	29,2	2	8	70	35	23,2			
17	15	17.7.2016 21:37	29,2	2	8	70,1	35	23,2			
18	16	17.7.2016 21:37	29,2	2	8	70,1	35	23,2			
19	17	17.7.2016 21:37	29,3	2	8	70	35	23,3			
20	18	17.7.2016 21:37	29,2	2	8	69,8	35	23,1			